

PMB's SW 313 / WV 298 - 299

"PROPORTIONAL" ROD-BUNCHMAKERS

In special design with head filler equipment



For the manufacture of pre-proportioned bunch-rods PMB makes a rodmaker, type SW-313. It is not a replacement, but a more advanced version of the well-known standard PMB rodmaker SW-280. The pre-proportioning principle of the bunches was improved and adapted to the specific requirements of the North American market. However, it might meet the demands of others also.

If required, the SW-313 can be made to operate as independent unit, making completely cylindrical, unshaped bunch-rods filled right up to the ends. It will then be fitted with a simple discharge belt, with cutting device if necessary. Generally however, the SW-313 will be coupled synchronously to a headshaper, type WV-298 or WV-299.

The headshaper WV-298 is an extra wide version of the well-known PMB headshaper WV-281, for lengths up to 350 mm. It will not be necessary to go further into the operating principle of this machine (see leaflet on the standard SW).

The mark 299 is another headshaper WV of special design. It has a centre pinching assembly to shape double-length bunch-rods. They will have been suitably pre-proportioned in the centre and at both ends in the preceding SW-313. After cutting these "double" bunches on the discharge belt of the WV, ordinary bunches with a cylindrical body and shaped burning as well as mouthends (Perfecto type) are obtained.

For both versions of the WV there is a device with two bobbins to put reinforcement tape on the mouth end of the bunch. Feeders remove the correct lengths of reinforcement tape from the reel after which these pieces are stuck onto the still cylindrical ends of the rods, before they are shaped in the pinchers.

If the bunches are wrapped in single length, they will have to be cut. There is a simple cutting device with circular knife and whetting stones, which can be fitted onto the discharge belt of the WV.

Specialists in machinery and equipment for the cigar industry



CREATIVE SUPPORT FOR YOUR BUSINESS

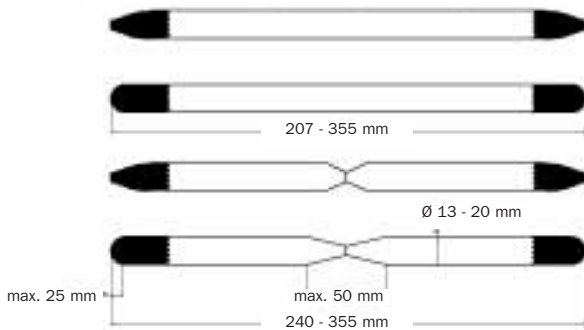
TECHNICAL DATA PMB'S SW 313 / WV 298-299



Bunch rod with reinforcement tape and proportionally distributed body filler and head filler prior to shaping.



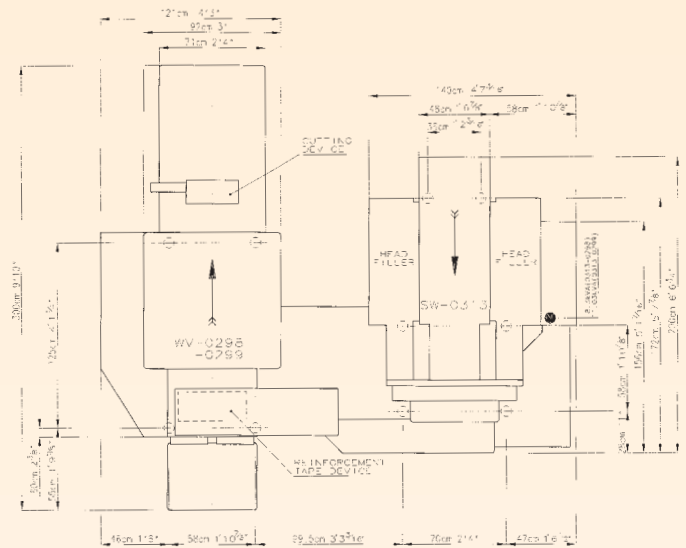
Four examples of possible bunch shapes, made in double lengths.



Special features of the SW/WV are:

The extra wide filler hopper, holding about 40% more than a standard SW-280. An extra hopper for special headfiller on each side of the main hopper for ordinary filler, to make double-length bunches with special headfiller at both ends, combined with a separate governing device in each of the three filler feeders. Threshed or cut cigar filler contains a percentage of very small particles. These have a tendency to move to the lowest point in the filler-hopper(s), at the foot of the ascending feed belt(s). In order to re-circulate these shorts and to minimise de-blending, the new SW-313 has a vertical belt with carriers to pick up the shorts at the bottom of the hopper(s) and return them to the top of the filler supply.

The PMB policy is one of continuous development and, therefore, we reserve the right to alter the above specification without notice.



The already well-known principle of the portioning system in the SW-280 was maintained in the new SW-313, though some technical points were perfected in order to keep the product consistent.

A heating element for the glue seam, which lifts automatically as soon as the machine stops, to prevent scorching the binder.

A rotating knife, with manually operated whetting stones, for the rod cutting device.

A second bobbin holder to speed up replacement of an empty reel, with an indicator to show that a reel is nearing its end.

A compression belt for the filler in front of the rod tunnel instead of a rotating disk.

A PLC control system in combination with an operator panel with display indicating all actual situations, counters and reasons of stoppages.

Head office:

PMB-UVA International B.V.	Meerenakkerweg 32
P.O. Box 7196, 5605 JD Eindhoven	5652 AV Eindhoven
The Netherlands	The Netherlands
Telephone +31 (0)40 2825000	uvapackaging@pmb-uva.com
Telefax +31 (0)40 2825001	www.pmb-uva.com

Sales and Service for USA and Canada:

PMB-UVA, Inc.	8111 Virginia Pine Ct.
P.O. Box 34410	Richmond, Virginia 23237
Richmond, Virginia 23234	United States of America
United States of America	uvapackaging@pmb-uvainc.com
Telephone +1 804 275 8067	www.pmb-uvainc.com
Telefax +1 804 271 3096	



CREATIVE SUPPORT FOR YOUR BUSINESS



MEMBER OF VDL GROEP B.V.